



# What's New?

***Cruisair***<sup>®</sup>

MARINE AIR SYSTEMS<sup>®</sup>  
**AIR**

# U Control Circuit Board



## FIRST TO KNOW

Date: July 30, 2015

Models or Product Affected: Cruisair & Marine Air Systems

Recipients: Dealers, Master Dealers, Distributors, OEMs, Manufacturer's Reps

### New U-Control Circuit Board For Cruisair and Marine Air Systems

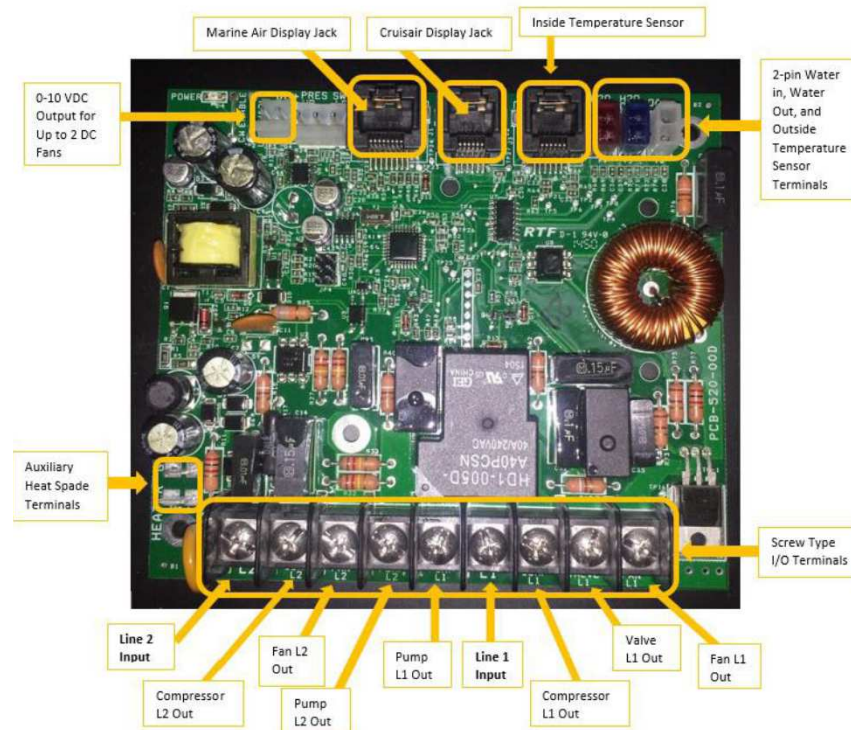
New "U" version hardware has been released to replace the circuit boards on the Cruisair Q-Logic and Marine Air Passport I/O controls for Turbo self-contained systems, Emerald split systems, and the tempered water/chilled water product lines.

#### • Changes For Cruisair

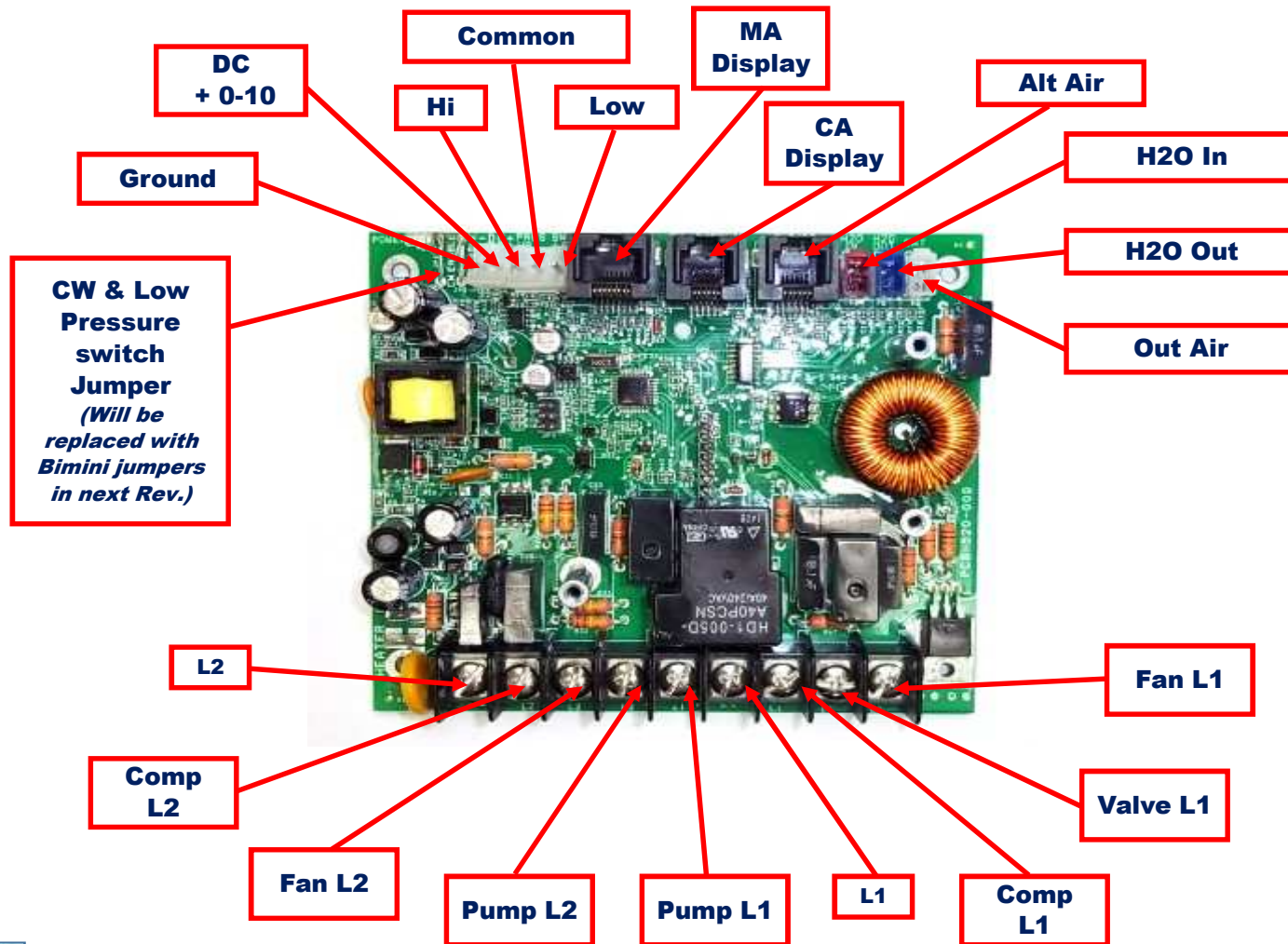
- The new U board began shipping from the factory during the second half of June 2015 starting with serial number 525xxxxx for Turbos and 526xxxxx for Emeralds. The rest of the Q and SMXII families will follow later this summer.
- Dometic has inventory of Q boards to cover end of life. At this time it is recommended to replace existing Q boards with a Q board. At a future time when Q boards are no longer available for replacement, the electrical box and harness will also need to be changed and Dometic will release retrofit electric box kits to replace Q boards.
- NOTE: Wire colors have changed!
- The U board is compatible with these Cruisair displays:
  - Q Logic – Qht, Q3
  - SMXII – SMXHT, SMXir, SMXIIAB
- The new U board is not compatible with the existing CAN Bus adapter (4250042) used in the following kits:
  - 763100027
  - 763100061
- U board with the CAN Bus daughter board will be available later this summer.

#### • Changes For Marine Air

- The new U board began shipping from the factory in early July 2015 starting with serial number 528xxxxx for Turbos, Emeralds, and chilled water systems.
- The U board is a mechanical drop-in replacement (same footprint), however the wiring and terminal-block layout do change. Order part number 223100502, which consists of the replacement U board for DX systems, generic wiring diagram, and terminal strip label. The U board is compatible with these Marine Air displays and firmware versions:
  - Elite – Firmware releases A13 and later.
  - Passport I/O – Firmware releases A12 and later.



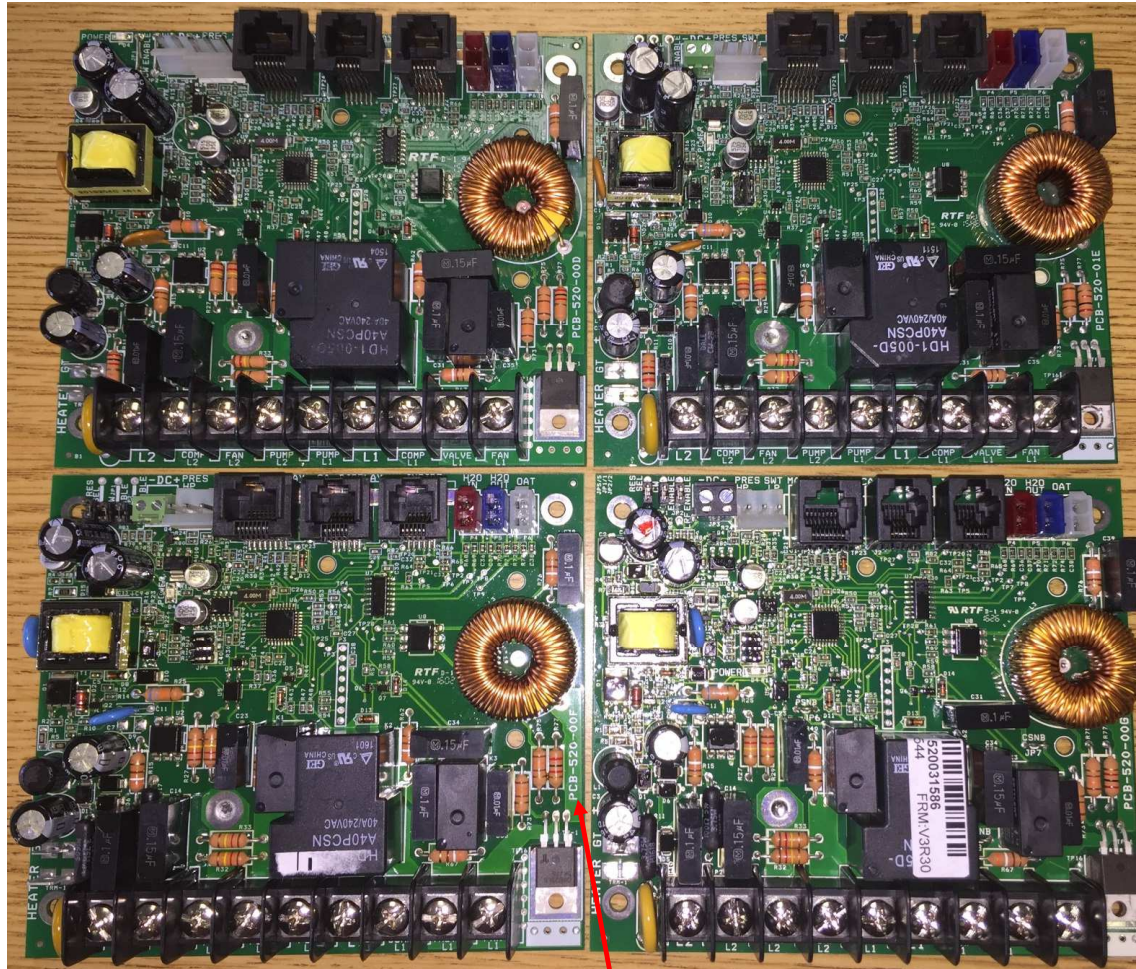
# U Control Circuit Board





## U Control Circuit Board Different Revision's

C or D



E

F

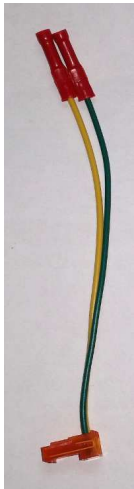
G

Rev will be in the PCB # on the board above the fan triac

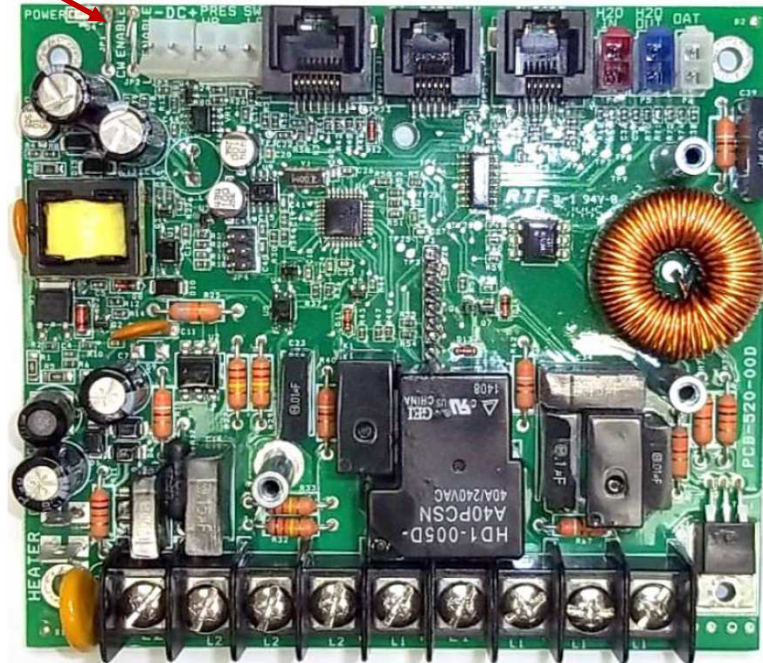
## U Control Circuit Board Revision C or D First Version Released Out In The field

### 2 Jumpers

JP1 for CW  
JP2 for LP switch



Optional DC  
adaptor  
required for DC  
blower  
operation for  
Rev D board  
p/n: 337788



### Air Temp Sensors

- Sensors are still optional for Marine Air.
- It depends on the display that is plugged in.
- If you use a Marine Air display you have to use a MA 6 pin 10K ohm temp sensor.
- If you use a Cruisair display you have to use a CA 4 pin 3K ohm temp sensor.



## U Control Circuit Board Rev E,F,G

These will be used with the Dometic Brand Units  
DTU, DEU, ECT.

3 Jumpers  
JP1 for CW  
JP2 for LP switch  
JP5 jumper for  
MAS sensors

Screw on  
connector for DC  
connections, so  
adapter will no  
longer be  
needed.



p/n 337788  
DC adaptor for DC blower  
operation will no longer be  
needed with Rev E U-Boards



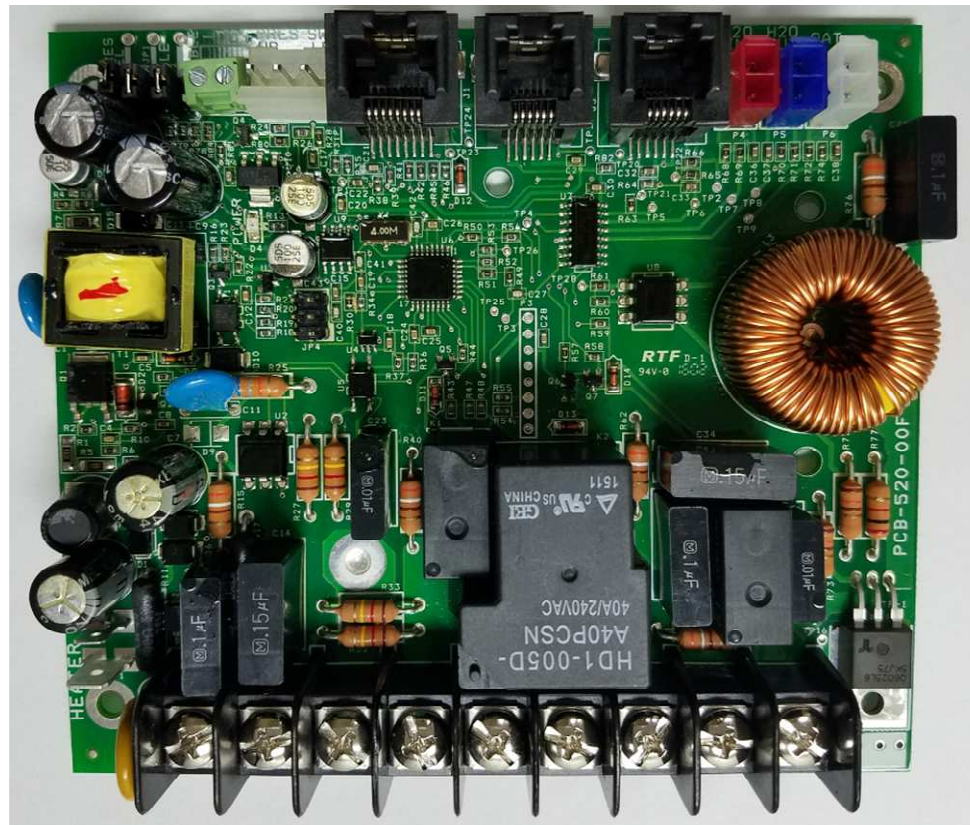
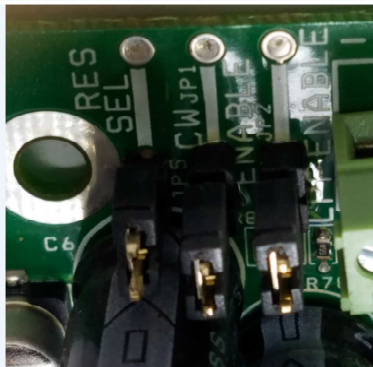
### Air temp sensors

- Sensors are still optional for Marine Air.
- A Marine Air display will work with a CA 4 pin 3K ohm sensor with JP5 jumper un-cut.
- If you use a MA 6 pin 10K ohm temp sensor, the JP5 jumper has to be cut.
- If you use a Cruisair display you have to use a CA 4 pin 3K ohm temp sensor, and leave the JP5 jumper un-cut.

## U Control Circuit Board, Rev F

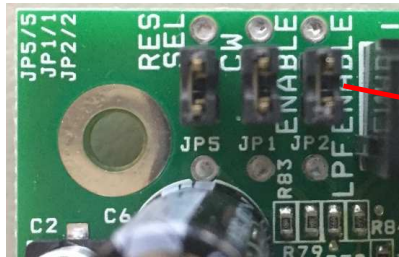


Main change is the Bimini Jumpers ( Top Left ).  
Now JP5 is label “RES SEL”  
“ it is used to select Marine air 10K ohms sensors or CA 3K ohms sensors.

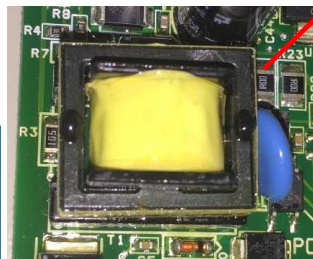




# U Control Circuit Board, Rev G

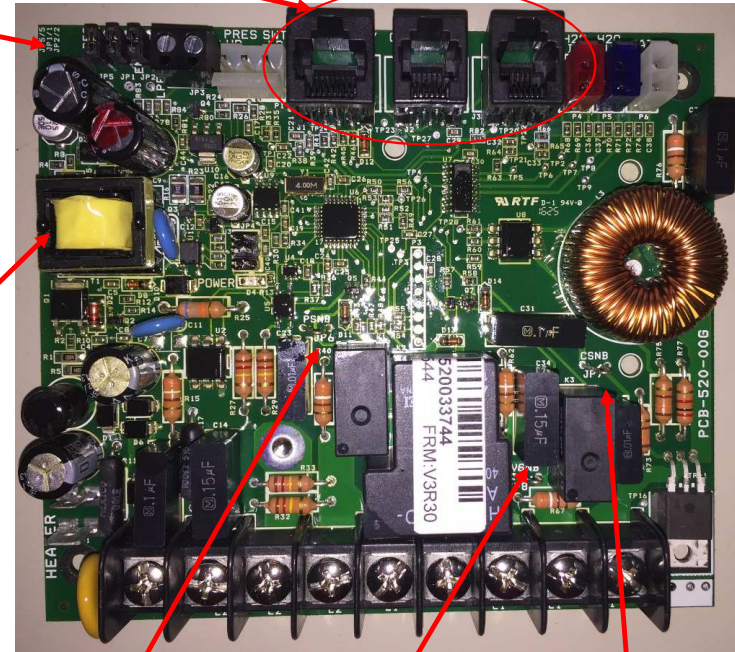


Move the Bimini jumpers away from cap to make it easier to access



Move the transformer and cap away from the edge of the board to better protect the cap.

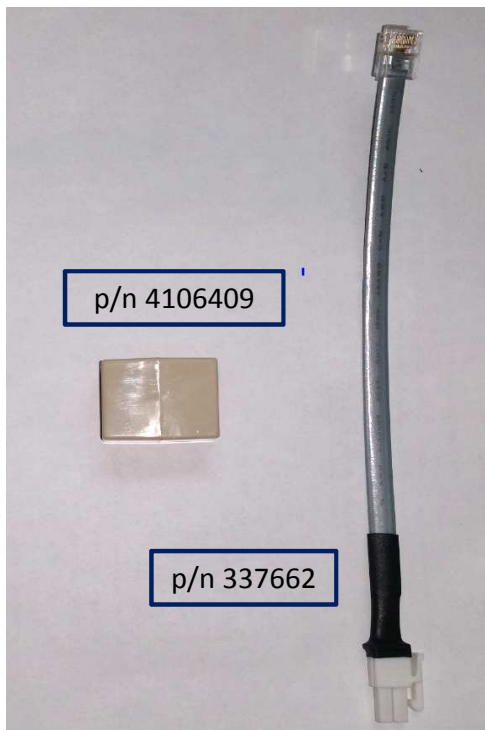
Changed display & temp jacks to through hole jacks for better durability



Added cuttable jumpers to allow pump, rv valve, or compressor snubbers to be disabled



# Adaptors for U Control Circuit Board



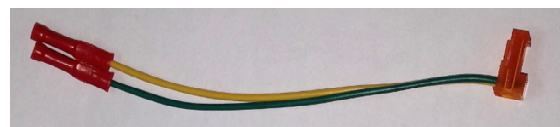
p/n 4106409

p/n 337662



Adaptors are necessary for retrofits or optional sensors.

New units will arrived with new sensors



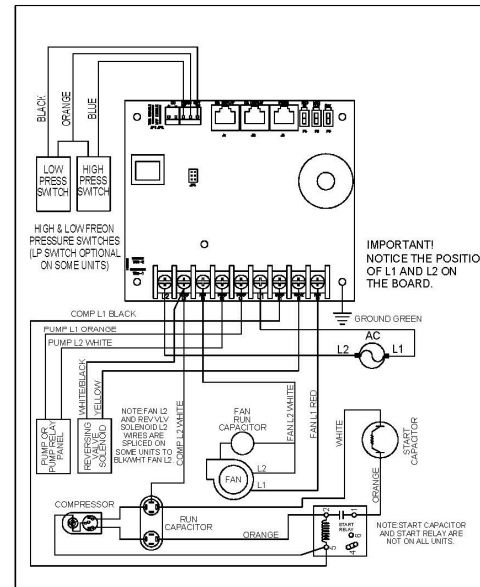
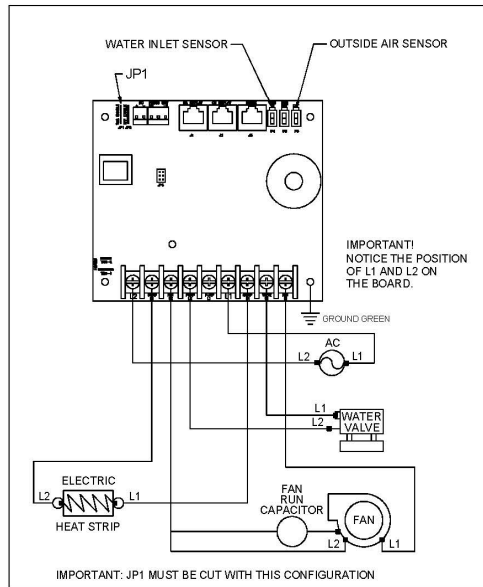
p/n 337788  
DC adaptor for DC operation will no longer be needed with Rev E U-Boards

Kit Number 222103190  
ADAPT SENSOR U-CNTRL WTR/OAS



# U Control Circuit Board

PROPRIETARY NOTE: THE INFORMATION CONTAINED WITHIN THIS DOCUMENT IS THE PROPERTY OF DOMETIC CORPORATION. ANY ATTEMPT TO COPY OR DISTRIBUTE WITHOUT WRITTEN CONSENT FROM DOMETIC CORPORATION SHALL BE CONSIDERED UNLAWFUL AND CAN BE CONTESTED IN A COURT OF LAW.



REV	DATE	REVISION DESCRIPTION	DWG	APR	Dometic Corporation		DOMETIC		
A	2/23/15	ADDED UNIT TYPE IDENTIFIERS & NOTE,CAD085-15	DRR	JPR	WIRING DIAGRAM U-CONTROL BOARD GENERIC				
B	6/30/15	REVISED TITLE AND NOTES,CAD365-15	DRR	JPR					
					DATE: 2/19/15	DWG BY: DRR	PART NUMBER: 338133	DWG 338133	REV B
					SCALE: NTS	APR BY: JPR			





# U Control Circuit Board Net DC

